

Drain Plugs Polyamide

Drain Plugs

- Drains condensed water in the housing.
- Helps to avoid any potential damage to sensitive electric/electronic equipment in the housing due to condensed water.
- Also allows air in the housing to breathe with the surrounding atmosphere.

Technical Details

Material	Body	PA 66
Ingress Protection Rating	IP 56 / IP 66 (Category 2)	
Flammability	V2 according to UL94	
Operating Temperature	Permanent	-20 °C to +100 °C
	Intermittent	-30 °C to +150 °C
Thread Type	• Metric EN 60423	
Accessories	• Lock nuts • Gaskets (Washers)	
Remarks	• We recommend the use of lock nuts and gaskets to ensure IP rating for rough surfaces or through holes. • All accessories must be ordered separately.	

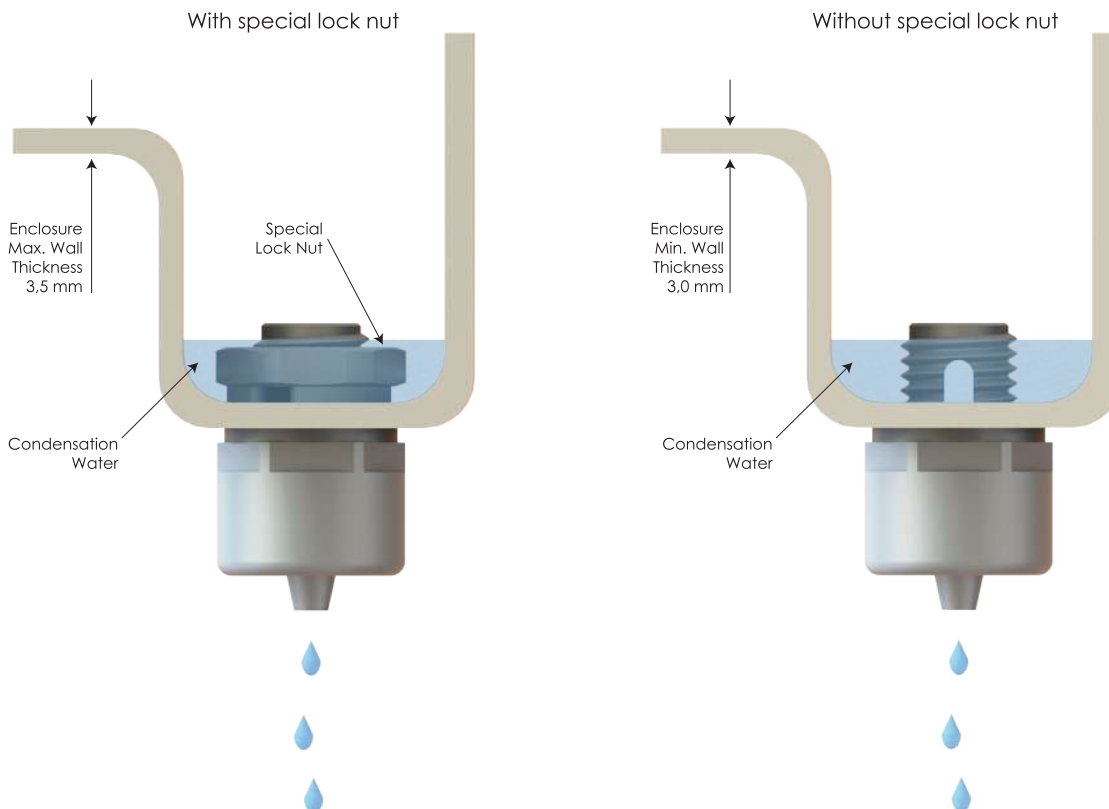


Order Coding

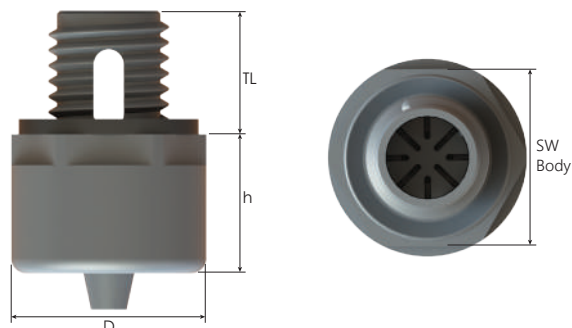
Part Number	-	Lock Nut
Mandatory	-	Option
See table	-	L Lock nut
Example		
BDRP-11	-	L



Ideally it should be located at the lowest point of the housing to ensure optimum draining.

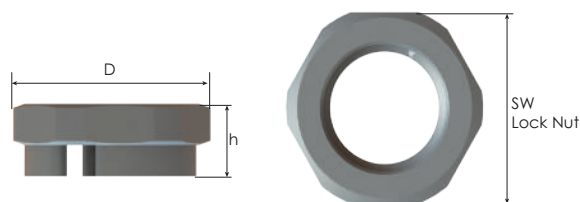
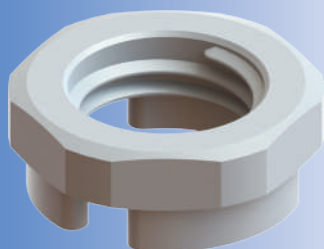


Drain Plugs Polyamide



Thread Type **METRIC acc. to EN 60423**

Outer Thread Size (Male)	Outer Thread Length TL mm	Outer Ø D mm	Height h mm	Part Number		
				RAL 7035 light grey	RAL 7001 grey	RAL 9005 black
M12x1,5	12,0	19,0	17,0	BPDRP-11	BPDRP-01	BPDRP-21



Special Lock Nuts for Drain Plugs

Inner Thread Size (Female)	Spanner Width SW Lock Nut mm	Outer Ø D mm	Height h mm	Part Number		
				RAL 7035 light grey	RAL 7001 grey	RAL 9005 black
M12x1,5	18	19,2	7,0	BML-1S (DRP)	BML-0S (DRP)	BML-2S (DRP)